

ALUMINUM FRAME TWO WAY HINGES

CLIP ON TWO WAY ALUMINUM FRAME HINGES

TCH-12102 SERIES



• Basic spec



Opening angle: 110 °



Aluminium profile width: 19-22mm



Drilling of hinge cup: 42mm



Finishing: Nickel plated



Distance of two holes center: 28mm



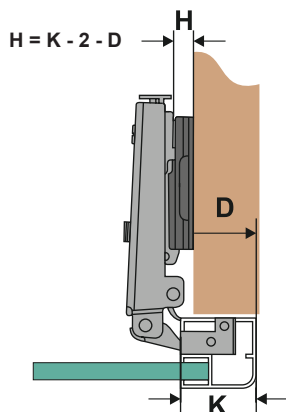
Main material: Cold-rolled steel



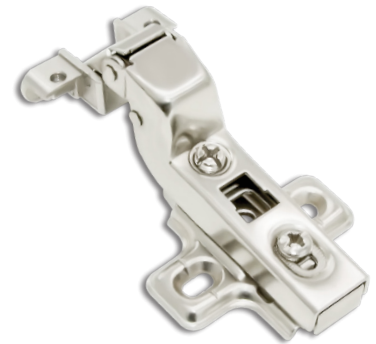
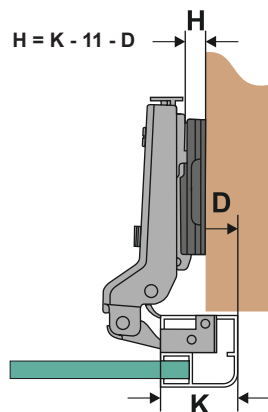
Material thickness: Zinc alloy - 1.2 - 1.2 mm



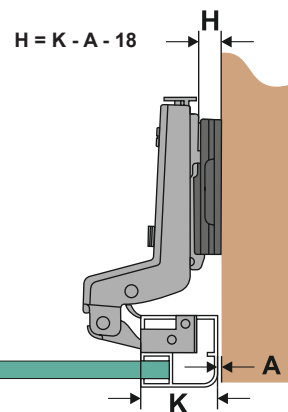
F
Full Overlay



H
Half Overlay



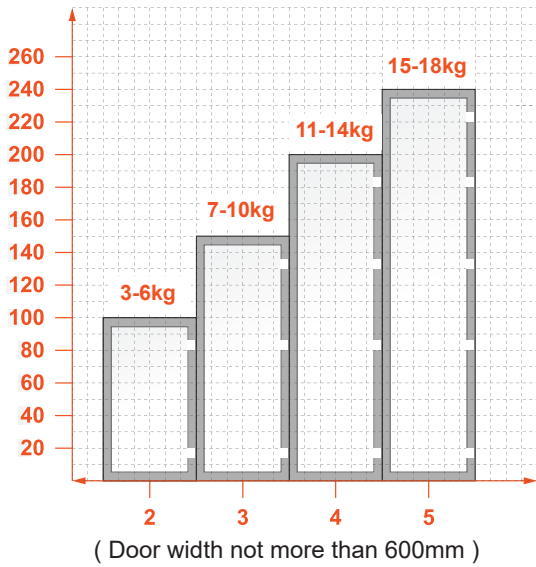
i
Inset



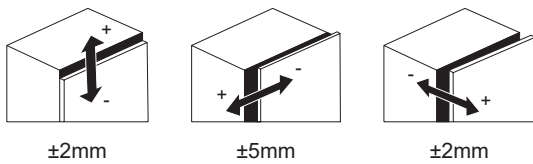
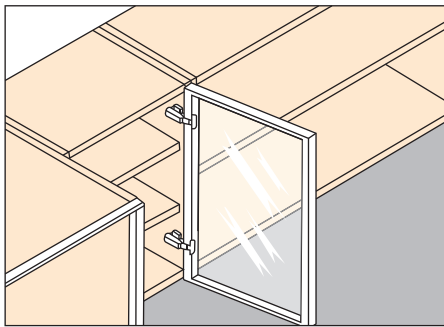
D	H	K	19	20	21	22
0	17	18	19	20		
2	15	16	17	18		
4	13	14	15	16		

D	H	K	19	20	21	22
0	8	9	10	11		
2	6	7	8	9		
4	4	5	6	7		

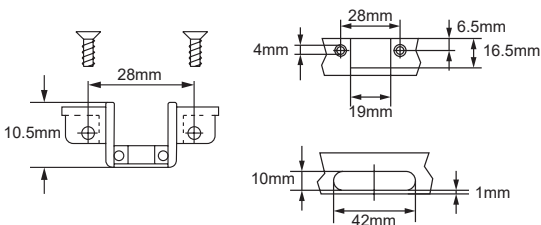
A	H	K	19	20	21	22
2	-1	0	1	2		
4	-3	-2	-1	0		



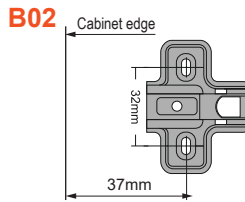
● **Application**



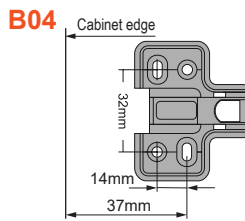
● **Dimension of hinge cup**



● **Mounting-plate**



Hole Type	H Value	Type
Two holes	H=0 / 2 / 4	Clip on



Hole Type	H Value	Type
Four holes	H=0 / 2 / 4	Clip on

● **Arm cover**

A.C1



A.C3



● **Alternative screw types**

