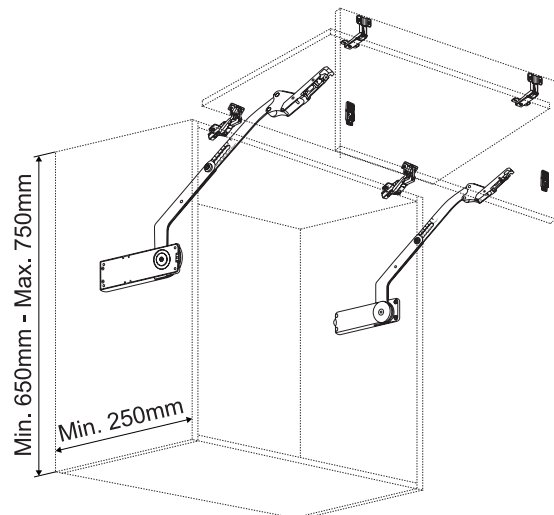


● **Basic spec**

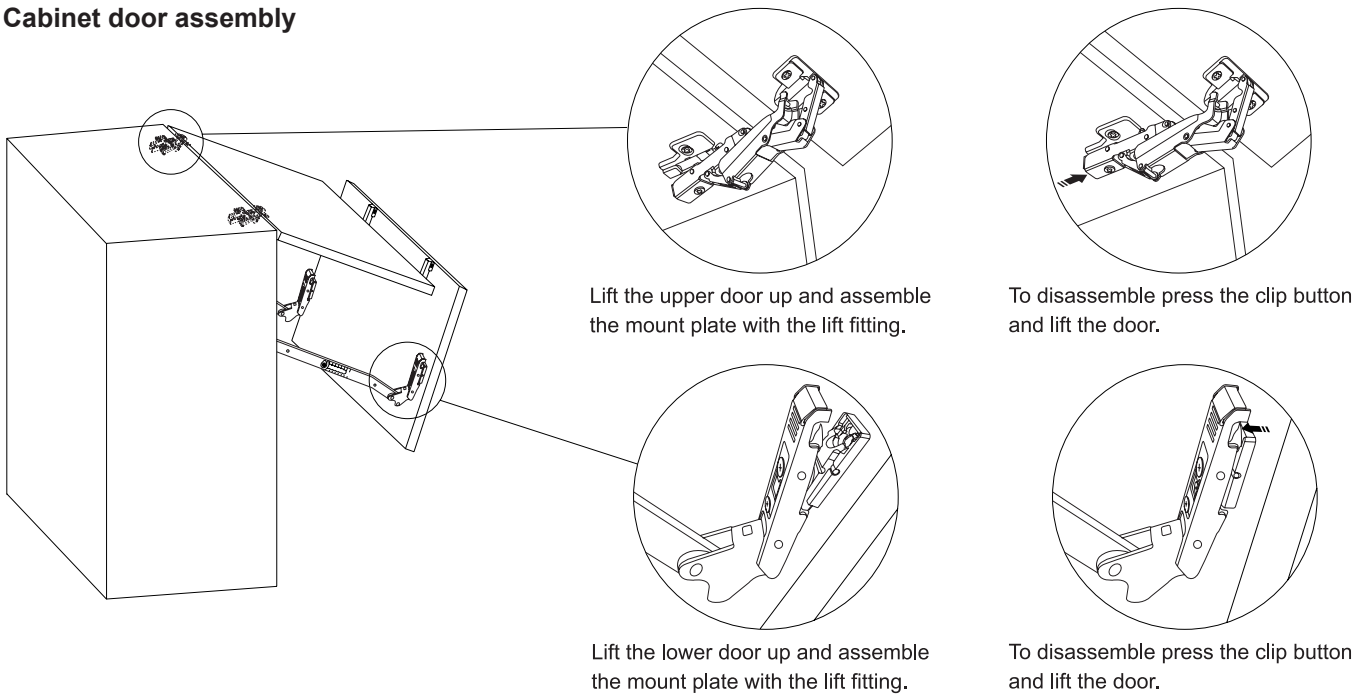
- Cabinet internal depth : Min. 250 mm
- Door height : 320 - 370 mm
- Door width : 450 - 900 mm
- Door thickness : 17 - 20mm
- Arms & brackets material : Cold-rolled steel
- Cover caps material : Plastic
- Finishing : powder coated



- The dimensions as cabinet height and cabinet door height should meet within the specification of following formula.  

$$\text{Cabinet Height} = \text{Door Height} \times 2 + (\text{Top board thickness-Overlay}) + (2\text{mm gap between upper door and lower door}) + (\text{Bottom board thickness-Overlay})$$
- The dimensions of upper door and lower door should be the same.
- The concealed hinge (overlay use) should be used as a door-hanging device. The TCH-14202165F3D concealed hinge is recommended.

● Cabinet door assembly



● Cabinet door adjustment

