

SOFT CLOSING UNDER MOUNT SLIDES

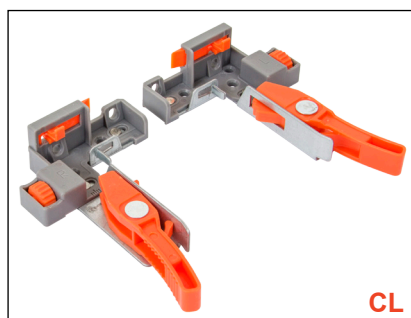
CLIP ON SOFT CLOSING UNDER MOUNT SLIDES

TCH-23101 SERIES



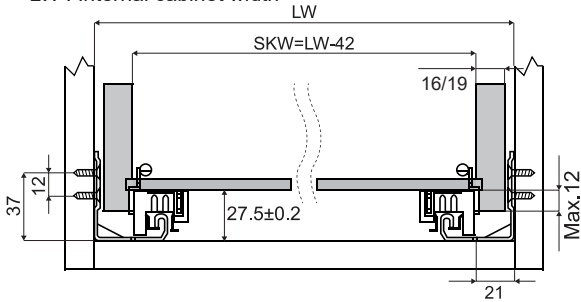
• Basic spec

- Concealed
- Frameless
- Length : 250mm - 600mm
- Side panels thickness : 16mm/19mm
- Drawer adjustment : 3D for 0 - 2 mm
- Clip device : Free quick installation
- Finishing : Galvanized steel
- Material : 1.0 - 1.5 - 1.8 mm cold-rolled steel
- Loading : 35 kg 18"
- Smooth and silent movement
- Soft closing



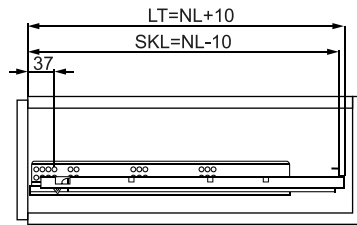
● **Space required**

SKW : Internal drawer width
LW : Internal cabinet width



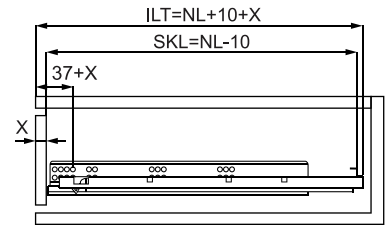
● **Standard drawer**

NL : Normal size
SKL : Length of drawer
LT : Min cabinet depth



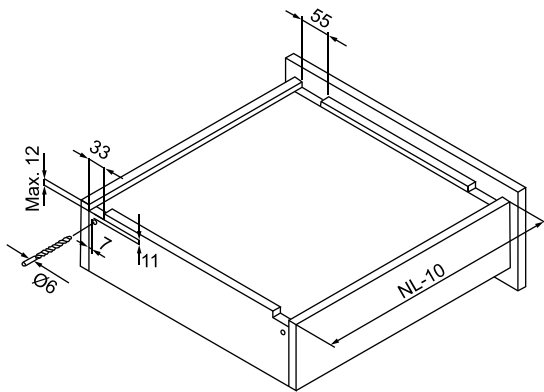
● **Inner drawer**

NL : Normal size
SKL : Length of drawer
ILT : Min cabinet depth
X : Thickness of the front panel



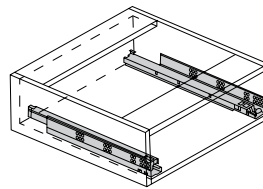
● **Hole size on rear panel of the drawer**

NL : Normal size

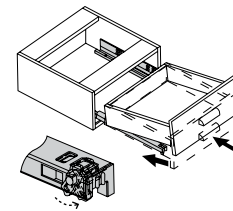


● **Installation instruction**

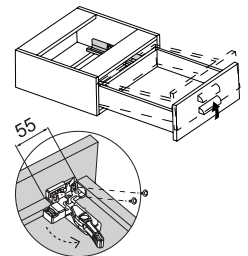
Installation of the slides



Installation of the drawer and adjustment



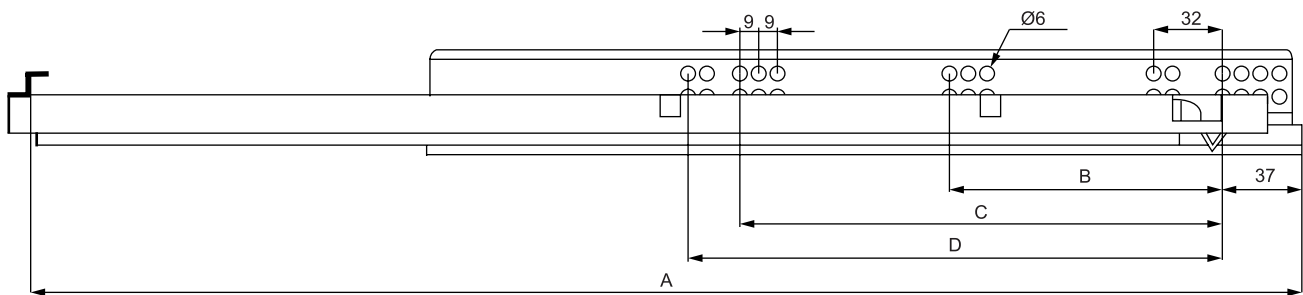
Removal of the drawer



The drawer can be adjusted 2mm vertically through the plastic adjustable parts

Press the clip device with your hands softly in the direction of the arrow, then remove the drawer

● **Specification**



Item No.	Size	Extension length	A	B	C	D
TCH-23101250	10" 250mm	229	240	128	--	--
TCH-23101300	12" 300mm	279	290	128	--	--
TCH-23101350	14" 350mm	329	340	128	224	--
TCH-23101400	16" 400mm	379	390	128	224	--
TCH-23101450	18" 450mm	429	440	128	224	--
TCH-23101500	20" 500mm	479	490	128	224	23
TCH-23101550	22" 550mm	529	540	128	224	23
TCH-23101600	24" 600mm	579	590	128	224	23